

Virtual Summer Enrichment Program

This program will provide three hours of synchronized structured virtual activities to current students in Grades K through 6. The program will run for the month of July 2021, beginning July 1st and ending July 30th (off for July 5th). The Virtual Summer Enrichment program will provide reading and math instruction utilizing Success Maker and the Savvas platform. The program will also provide virtual experiences through ESBOCES Arts-in-Education as well as Cornell Cooperative. Participants will receive all materials needed to complete the Virtual Summer Program prior to the start date.

**Central Islip District
Residents Registration:**

**Please use this QR Code to
register your child(ren).**



Informational Zoom Meeting:

May 17, 2021

7:00 PM - 7:30 PM

Meeting ID: 923 0596 9082

Passcode: 014621

Sample Daily Schedule

Time	Subject
8:30 AM-9:00 AM	Guiding Reading Instruction- with a Teacher
9:00 AM-9:30 AM	Small Group Instruction using Savvas Success Maker
9:30 AM-9:50 AM	Physical Activity
9:50 AM-10:00 AM	BREAK
10:00 AM-10:30 AM	Math Instruction- with a Teacher
10:30 AM-11:00 AM	Small Group Instruction (Science, Technology, Engineering, Arts & Mathematics)
11:00 AM-11:30 AM	Arts-In-Education (Virtual fieldtrips and experiences)

Students will participate in guided reading groups with a New York State licensed teacher.

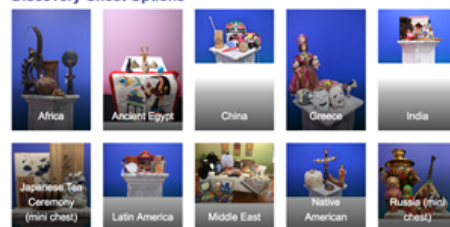
We will be utilizing Success Maker for both math and reading instruction.

In addition, all students will participate in Arts-In-Education, STEAM based units that align to standards. Students will do hands-on activities with materials that will be provided to them prior to the start of the program.

Please remember that **S-MORE** learning is great for our students in the summer!!! Working together we can prevent the summer slide.

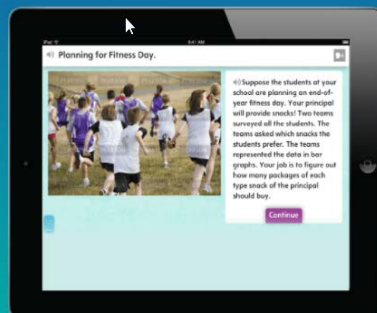


Discovery Chest Options



Creates problem solvers.

Authentic problems engage students with mathematical ideas and relationships. There are multiple steps and multiple ways to solve the problem – and support if setbacks occur.



***Program may be adjusted due to the pandemic.**